


APPLICABLE STANDARD						
RATING	OPERATING TEMPERATURE RANGE	-30°C TO +85°C		STORAGE TEMPERATURE RANGE	-30°C TO +85°C NO CONDENSATION	
	POWER	2 W ※2		CHARACTERISTIC IMPEDANCE	50 Ω	
	FREQUENCY RANGE	DC TO 2500 MHz		OPERATING HUMIDITY RANGE	% TO 90%	
SPECIFICATIONS						
ITEM	TEST METHOD			REQUIREMENTS	QT	AT
CONSTRUCTION						
GENERAL EXAMINATION	VISUALLY AND BY MEASURING INSTRUMENT.			ACCORDING TO DRAWING.	×	×
MARKING	CONFIRMED VISUALLY.					
ELECTRIC CHARACTERISTICS						
CONTACT RESISTANCE	100mA DC MAX.			CENTER 75 mΩ MAX. OUTER 50 mΩ MAX.	×	×
INSULATION RESISTANCE	100V DC.			1000 MΩ MIN.	×	-
VOLTAGE PROOF	100V AC FOR 1 min.			NO INSULATION DETRUCTION	×	×
V.S.W.R. ※1	FREQUENCY DC TO 2000 MHz			1.3 MAX	×	-
	FREQUENCY 2000 TO 2500 MHz			1.5 MAX		
INSERTION LOSS ※1	FREQUENCY DC TO 1000 MHz			0.3 dB MAX.	×	-
	FREQUENCY 1000 TO 2000 MHz			0.4 dB MAX.		
	FREQUENCY 2000 TO 2500 MHz			0.6 dB MAX.		
ISOLATION ※1	FREQUENCY DC TO 1000 MHz			20 dB MIN.	×	-
	FREQUENCY 1000 TO 2000 MHz			14 dB MIN.		
	FREQUENCY 2000 TO 2500 MHz			12 dB MIN.		
MECHANICAL CHARACTERISTICS						
DURABILITY ※1	10000 TIMES INSERTIONS AND EXTRACTIONS. AT THE CONDITION A: DC ~ 2000MHz B: 2000MHz ~ 2500MHz			1) CONTACT RESISTANCE : CENTER :100 mΩMAX. OUTER : 75 mΩMAX. 2) V.S.W.R. A : 1.5 MAX B : 1.7 MAX 3)INSERTION LOSS A : 0.5 dB MAX B : 0.7dB MAX 4)MUST NOT HAVE HEAVY CORROSION.	×	-
VIBRATION	FREQUENCY : 10 TO 55 Hz SINGLE AMPLITUDE : 0.75mm 1 CYCLE : 5 min , 10 CYCLES FOR EACH 3 DIRECTIONS.			1) NO ELECTRICAL DISCONTINUITY OF 10μs. 2) CONTACT RESISTANCE : CENTER :100mΩMAX. OUTER : 75 mΩMAX. 3) NO DAMAGE, CRACK AND LOOSENESS OF PARTS.	×	-
SHOCK	ACCELERETION : 490 m/s ² DURATION : 11ms , HALH SINE WAVE 3 TIMES FOR EACH 3 DIRECTIONS.			1) NO ELECTRICAL DISCONTINUITY OF 10μs. 2) CONTACT RESISTANCE : CENTER :100mΩMAX. OUTER : 75 mΩMAX. 3) NO DAMAGE, CRACK AND LOOSENESS OF PARTS.	×	-
	COUNT	DESCRIPTION OF REVISIONS		DESIGNED	CHECKED	DATE
△						
REMARK				APPROVED	KJ. KAWAMURA	06.05.17
※1 STD VALUE NOMAL CLOSED : RECEPTACLE NOMAL OPEN : RECEPTACLE + PLUG				CHECKED	RZ. KANO	06.05.17
※2 TO BE SATISFIED SPECIFICATION WITH INPUT POWER FOR 4W FOR 1/8 DUTY.				DESIGNED	YH. MATSUO	06.05.16
Unless otherwise specified, refer to JIS C 5402.				DRAWN	YH. MATSUO	06.05.16
Note QT:Qualification Test AT:Assurance Test ×:Applicable Test				DRAWING NO.		ELC4-180563-00
HRS	SPECIFICATION SHEET			PART NO.	MS-145NB	
	HIROSE ELECTRIC CO., LTD.			CODE NO.	CL358-0223-7-00	△

2007/03/03 01:38:59 ctribble

DRAWING FOR REFERENCE: This is subject to change without notice

SPECIFICATIONS					
ITEM	TEST METHOD	REQUIREMENTS	QT	AT	
ENVIRONMENTAL CHARACTERISTICS					
RAPID CHANGE OF TEMPERATURE	TEMPERATURE -55 → 15~35 → 85 → 15~35 °C TIME 30 → 2~3 → 30 → 2~3 min TEST UNDER 5 CYCLES AND LEAVE IT FOR ONE HOUR OR TWO.	1)CONTACT RESISTANCE: CENTER : 100 mΩ MAX OUTER : 75 mΩ MAX. 2)INSULATION RESISTANCE. 10 M Ω MIN 3)NO DAMAGE, CRACK AND LOOSENESS OF PARTS.	x		—
DAMP HEAT (STEADY STATE)	EXPOSED AT 40 °C, 90 ~95 %, 96h. THEN LEAVE IT FOR ONE HOUR OR TWO IN THE AMBIENT TEMPERARURE AND HUMIDITY.	1)CONTACT RESISTANCE: CENTER : 100 mΩ MAX. OUTER : 75 mΩ MAX. 2)INSULATION RESISTANCE. 10 M Ω MIN 3)NO DAMAGE, CRACK AND LOOSENESS OF PARTS.	x		—
SALT SPRAY (CORROSION)	AFTER 5±1% SALT WATER SPRAY FOR 48 HOURS. TEMPERATURE 35 ± 2 °C	1)CONTACT RESISTANCE: CENTER : 100 mΩ MAX. OUTER : 75 mΩ MAX 2)MUST NOT HAVE HEAVY CORROSION	x		—
RESISTANCE TO SOLDER HEAT	SOLDER TEMPERATURE 260°C FOR IMMERSION DURATION 10 sec.	NO DAMAGE, CRACK AND LOOSENESS OF PARTS.	x		—
Note QT:Qualification Test AT:Assurance Test ×:Applicable Test		DRAWING NO.	ELC4-180563-00		
HRS	SPECIFICATION SHEET	PART NO.	MS-145NB		
	HIROSE ELECTRIC CO., LTD.	CODE NO	CL358-0223-7-00		2/2

DRAWING FOR REFERENCE: This is subject to change without notice

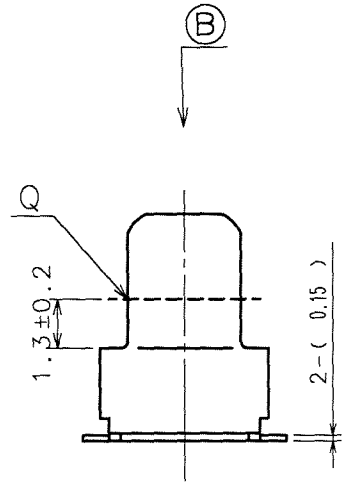
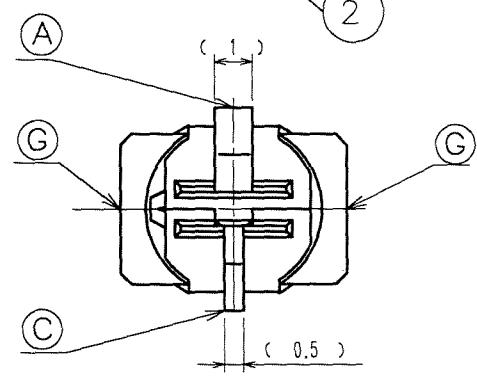
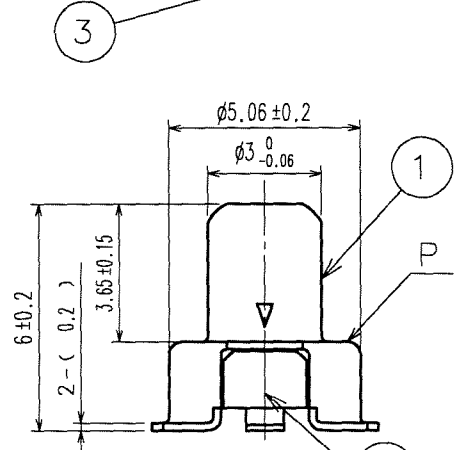
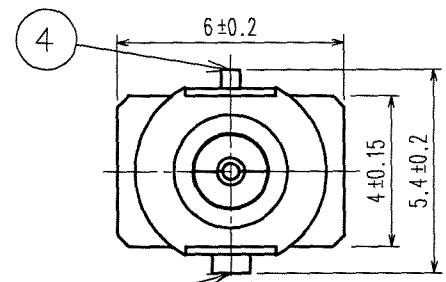
2007/03/03 01:39:00 ctribble

FORM HD0011-2-2

2007/03/03 01:39:00 ctribble

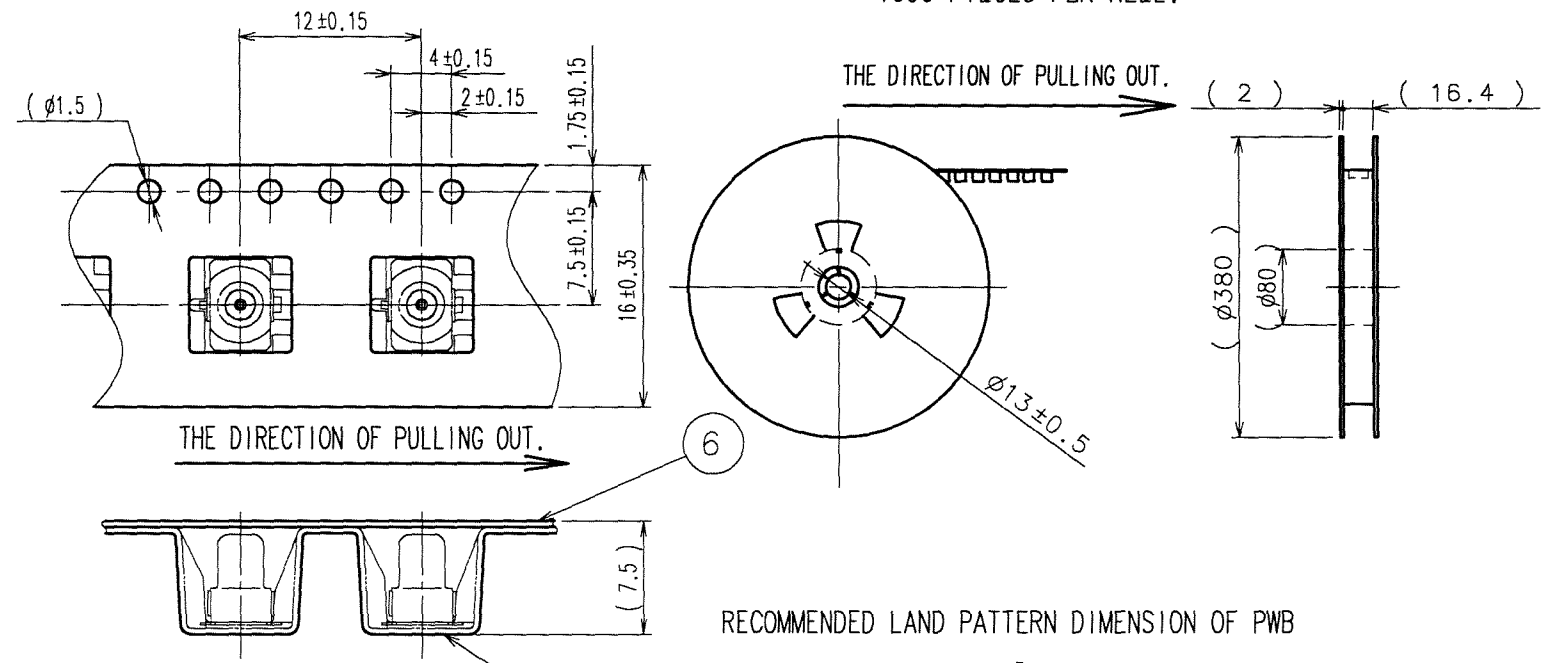
DRAWING FOR REFERENCE: This is subject to change without notice

COUNT	DESCRIPTION OF REVISIONS	BY	CHKD	DATE	COUNT	DESCRIPTION OF REVISIONS	BY	CHKD	DATE
▲					▲				
▲					▲				
▲					▲				

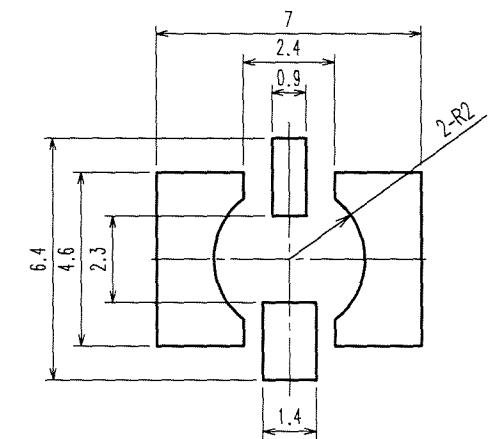


TAPE AND REEL PACKING (FREE)

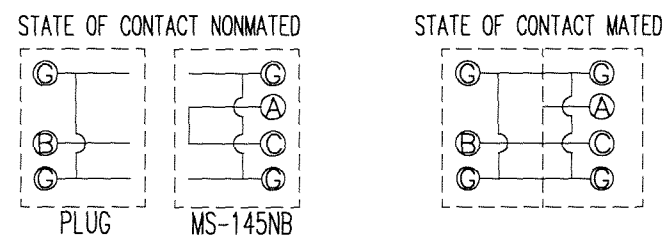
1000 PIECES PER REEL.



RECOMMENDED LAND PATTERN DIMENSION OF PWB



NOTE 1. USE THIS PRODUCT WITH MS-145-HRMJ/MS-145-HRMP-A/MS-145-C(LP)-A/MS-145-C(LP)-1 AND EQUIVALENT CONTACT MATED.
 FOR THE USE OF MS-145-HRMJ, MS-145-C(LP)-A AND EQUIVALENT, PUSH THEM ON THE POSITION P.
 FOR THE USE OF MS-145-C(PL)-1, PUSH THIS ON THE POSITION Q.
 POSITION Q MUST BE NOMINAL STOP POSITION AS YOUR SET DESIGN.
 USE WITH THE STRUCTURE WHICH ALWAYS KEEP IN TOUCH TO THE POSITION P OR Q, OR WITH LOCK STRUCTURE.
 2. COAXIAL SWITCH CIRCUIT SHALL BE AS FOLLOWS:



- 3. LEAD CO-PLANARITY TO BE 0.15 MAX.
- 4. THIS PRODUCT IS IMPOSSIBLE TO WASH.
- 5. AVOID SHOCKING TO THIS PRODUCT DIRECTLY.

3	BERYLLIUM COPPER	OTHERS: NICKEL PLATING	6	PS-E	TOP COVER TAPE
		SMT AREA: GOLD PLATING	5	PS-E	EMBOSSED CARRIER TAPE
		CONTACT AREA: GOLD PLATING			
2	POLYAMIDE	BLACK UL94HB	4	BERYLLIUM COPPER	OTHERS: NICKEL PLATING
1	PHOSPHOR BRONZE	GOLD PLATING			SMT AREA: GOLD PLATING
					CONTACT AREA: GOLD PLATING
NO.	MATERIAL	FINISH, REMARKS	NO.	MATERIAL	FINISH, REMARKS

CODE NO. (OLD)	DRAWN	DESIGNED	CHECKED	APPROVED	RELEASED
	<i>Y. Matsumoto</i>	<i>Y. Matsumoto</i>	<i>R. Kanno</i>	<i>K. Kawamura</i>	
	'06.5.16	'06.5.16	'06.5.17	'06.5.17	

SCALE	DRAWING NO.	PART NO.
5 : 1	EDC3-180563	MS-145NB
UNITS	CODE NO.	
mm	CL358-0223-7	

HRS HIROSE ELECTRIC CO., LTD.